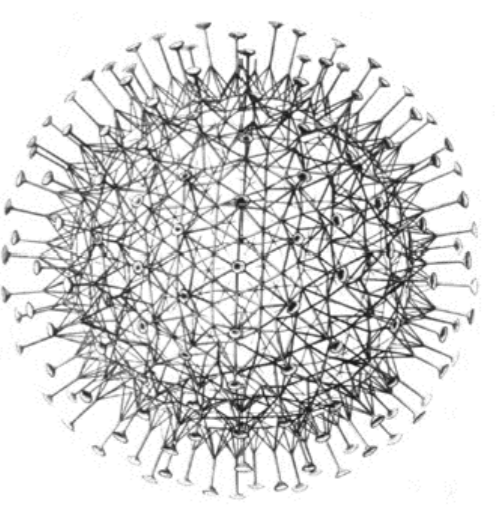
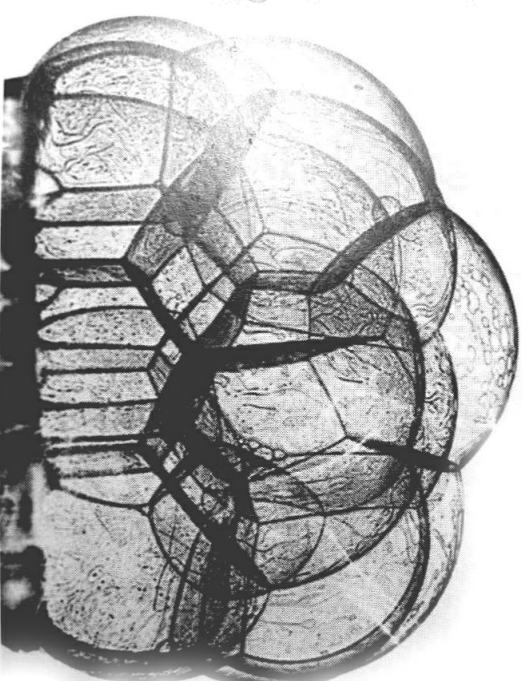


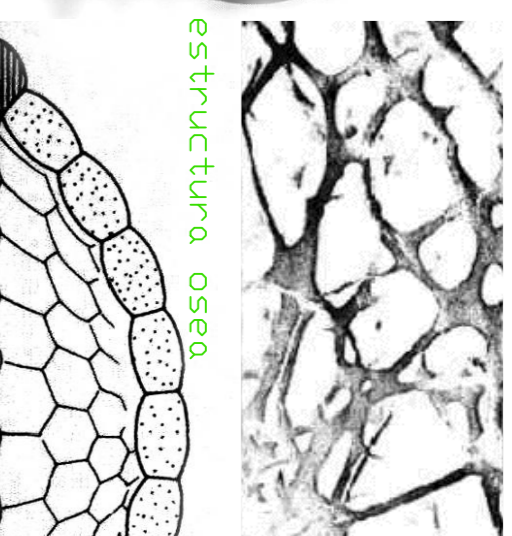
mallá 3D



Le Ricola's: ensayos



asociación neumática (bombas)



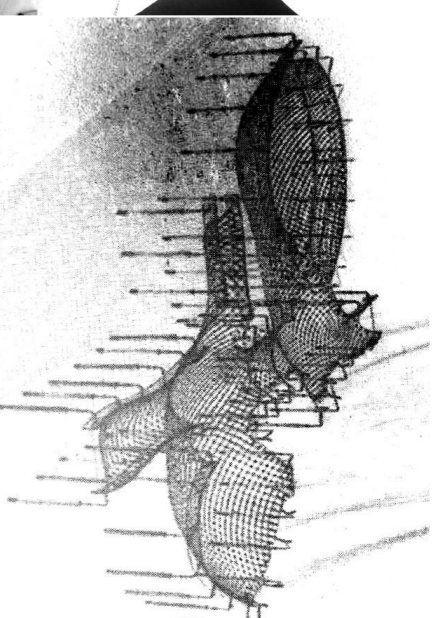
estructura ósea



sección



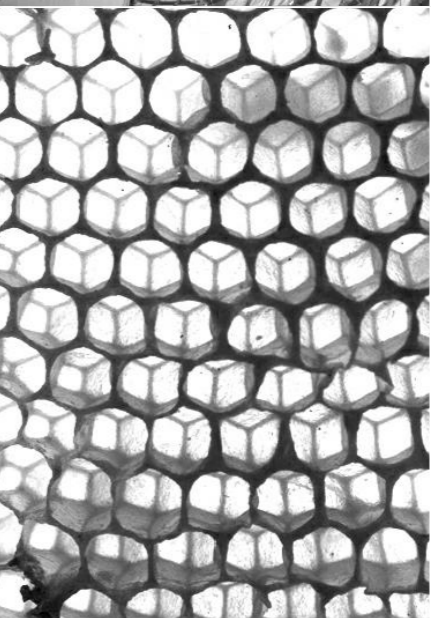
Pabellón Seed Frey Otto



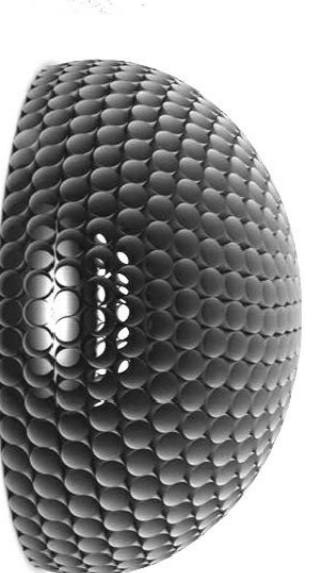
Shiguernu Ban



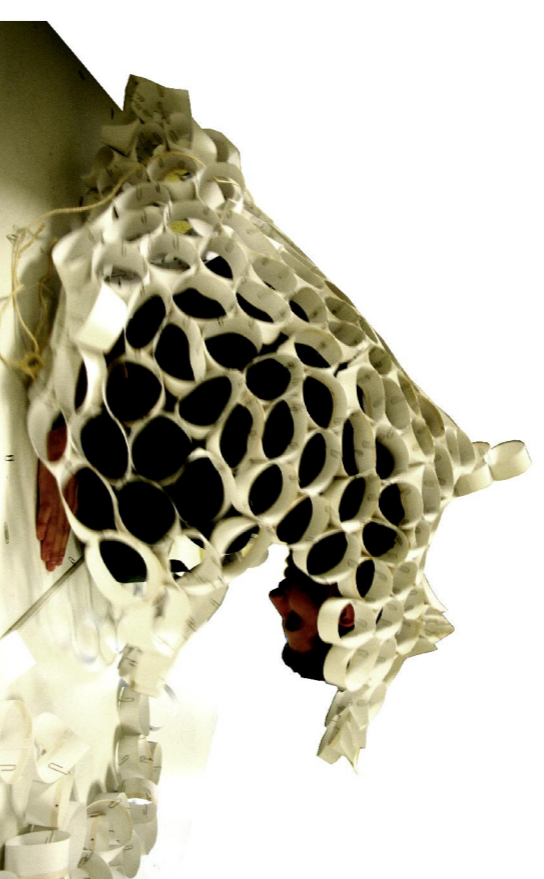
Panal de abeja



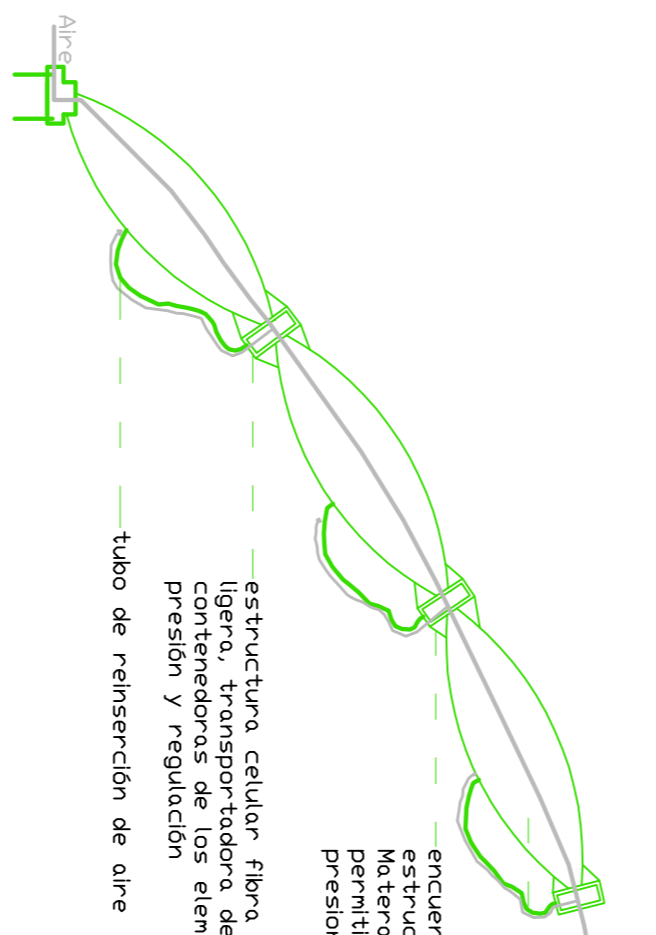
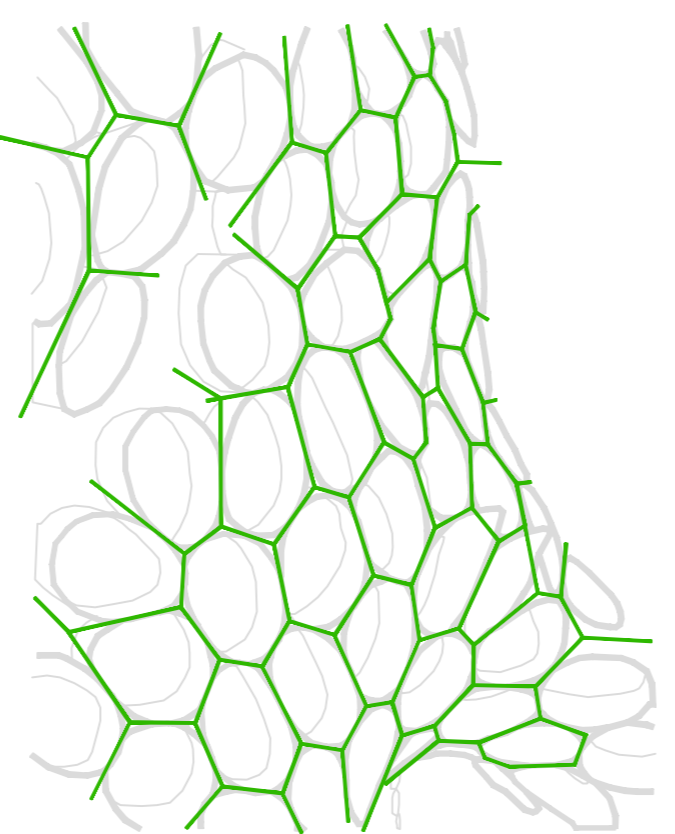
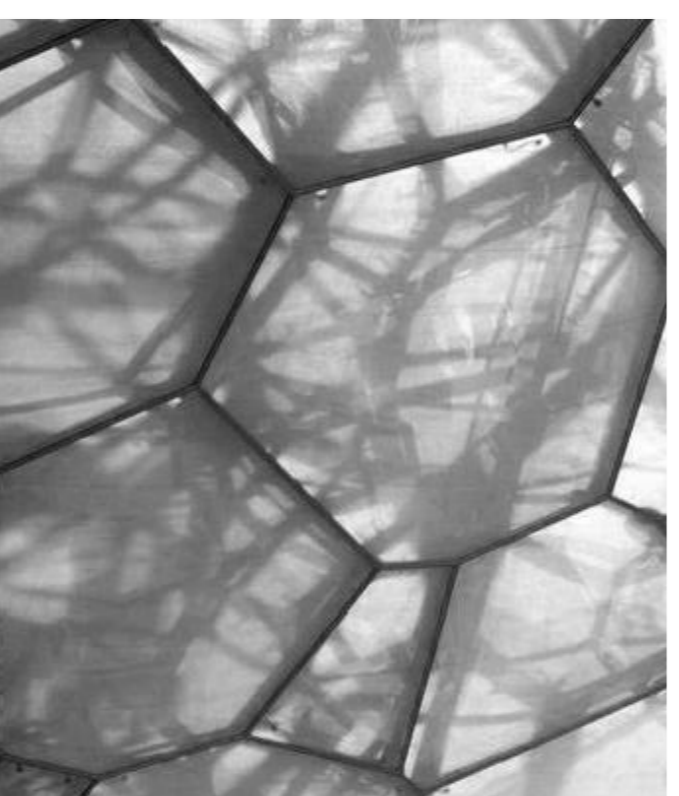
Fibra de carbono



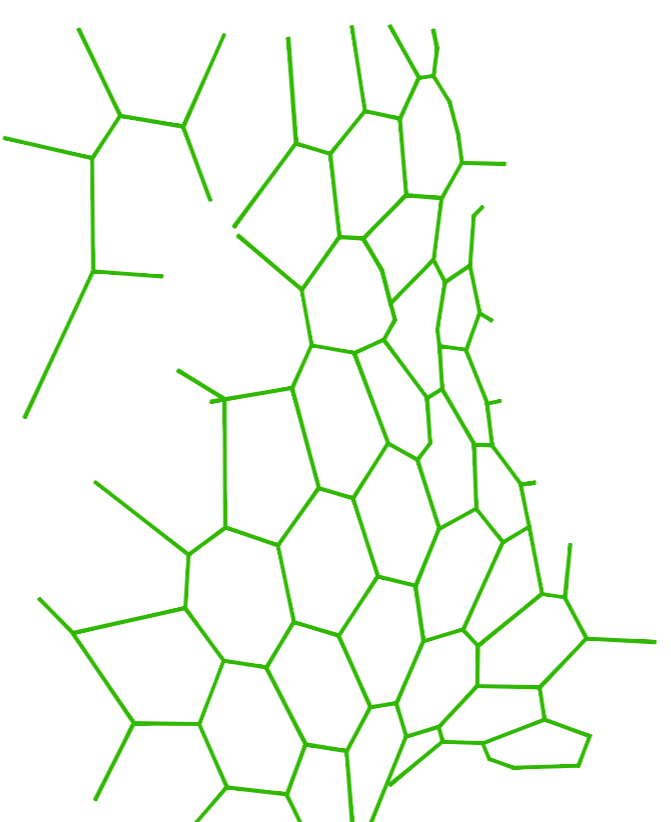
Low Tech A:
ESTRUCTURA PAPEL-CARTÓN



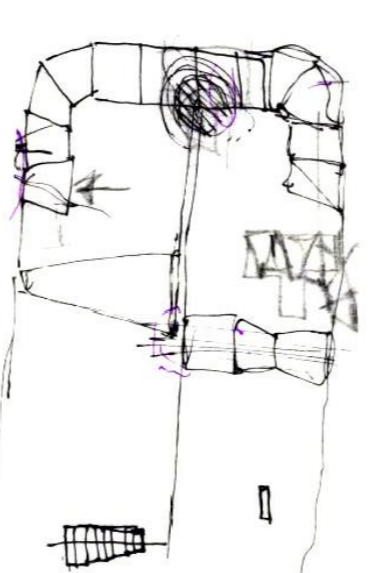
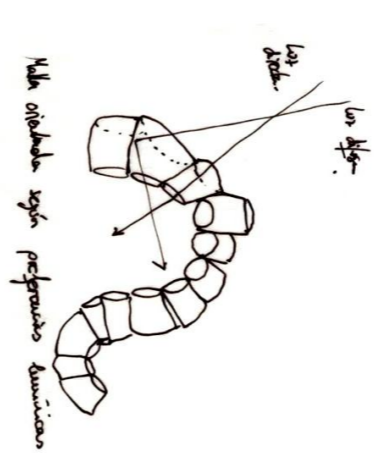
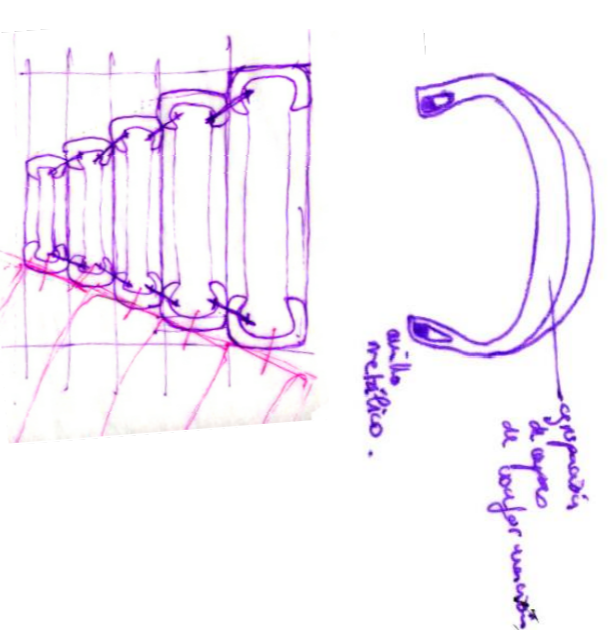
High Tech A:
ENCAPSULADO DE EFTE



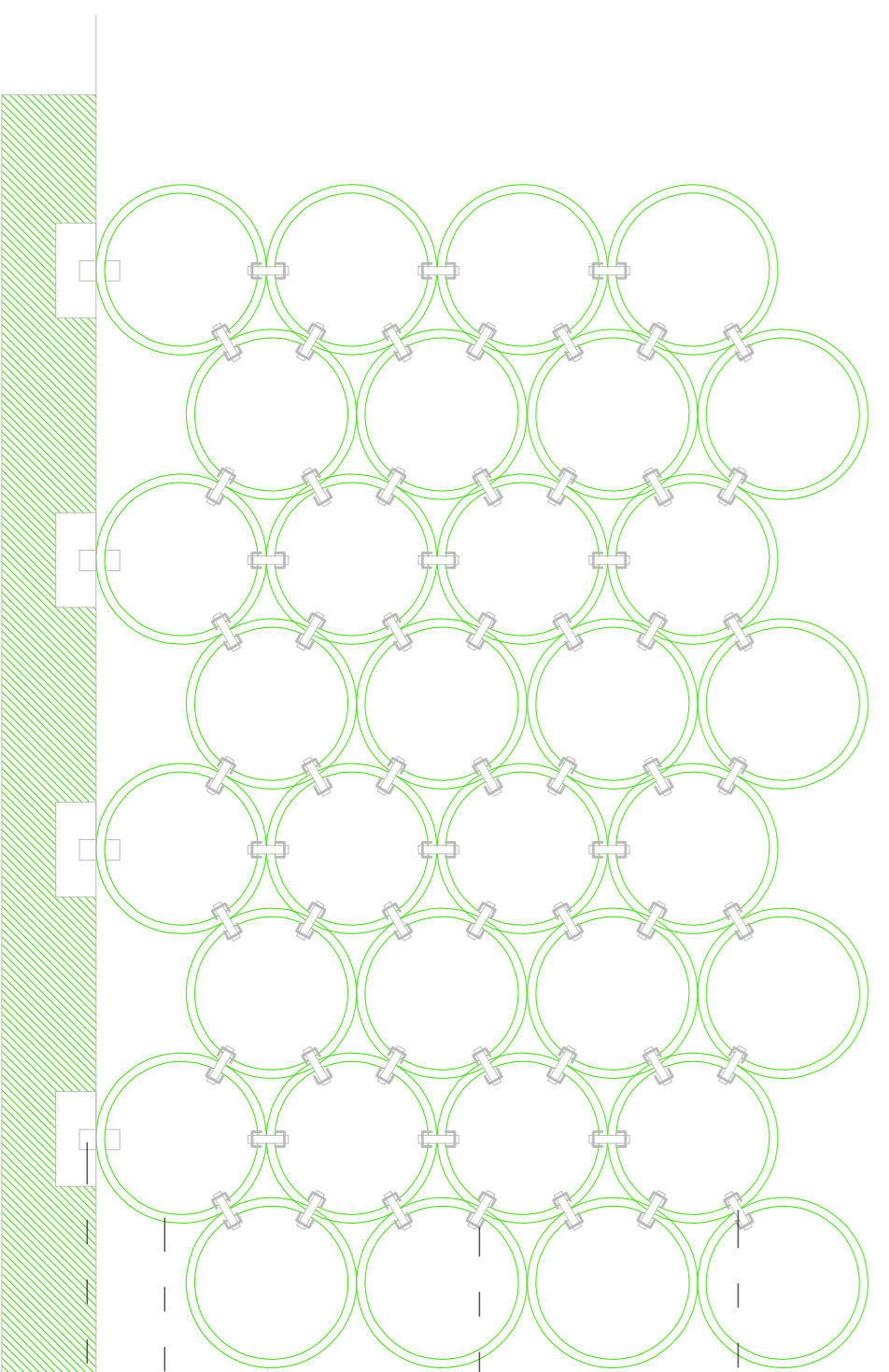
encapsulado de efte
encuentro de capsula y estructura celular, permitiendo diferentes presiones
estructura celular fibra plastica ligera, transportadora de aire y contenedora de los elementos de presión y regulación
tubo de reimpresión de aire



Low Tech B:
ESTRUCTURA CON NEUMÁTICOS



High Tech B:
FIBRA DE CARBONO



Tornillo de conexión entre cilindros
Elemento tensador
Tubo de fibra carbon
Anclaje al terreno mediante atorillado

